



BUCKEYE TRACTOR CO

Parts List

**Model 2131-T
BED SHAPER**

Version A14 • Serial No. 5170100 • Effective 9-1-13

Serial No: _____ Date Received: ___ / ___ / ___

Purchased From: _____

Order / Invoice No: _____



BUCKEYE TRACTOR CO

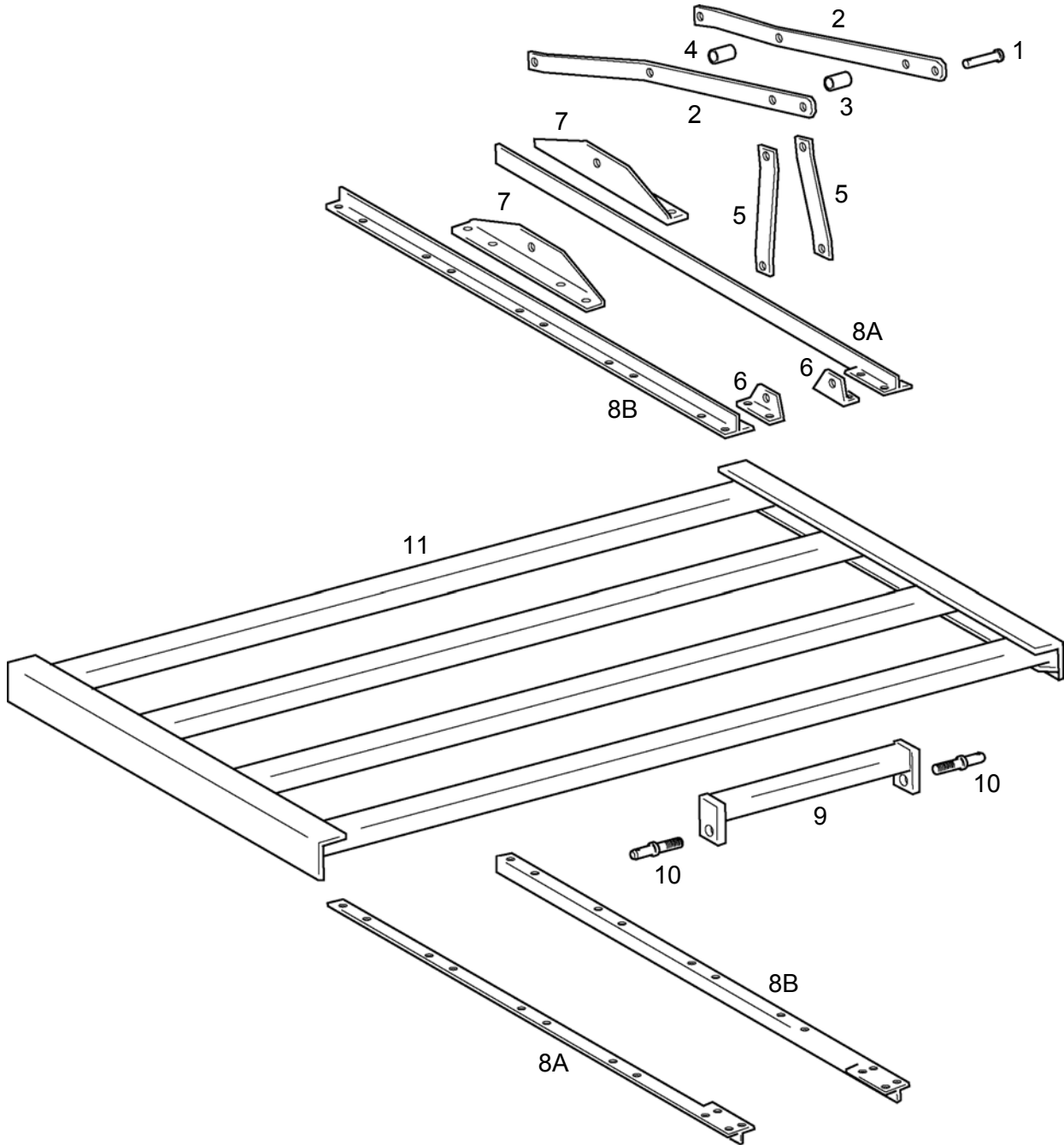
P.O.Box 97 • 11313 Slabtown Road • Columbus Grove, Ohio 45830 USA

Call 419-659-2162 • Fax 419-659-2082

800-526-6791 • www.BucTraCo.com

YOUR PURCHASE INCLUDES COMPLETE AFTER-SALE SERVICE

PARTS LIST

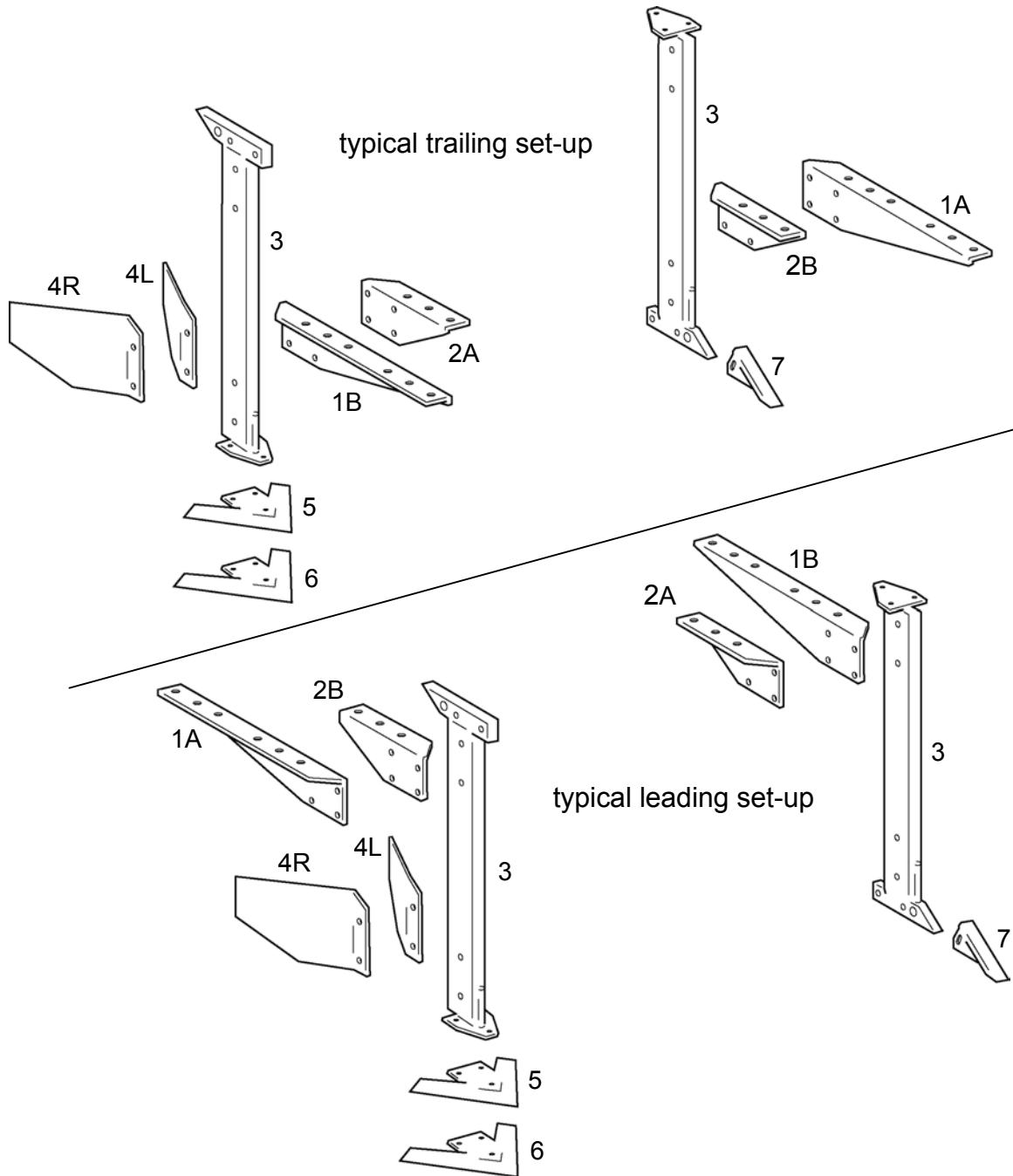


PARTS LIST

Ref	Quan	Part No	Description	Price
	1	21514	Toolbar Hitch - includes Ref 1 thru 10	_____
1	1	517-512	Hitch Pin, 3/4 x 3-1/4	_____
	1	511-354	Linch Pin, 1/4	_____
2	2	518-812	Top Hitch Bar	_____
	2	511-143	Hex Capscrew, 5/8-11 x 1-3/4	_____
	1	511-027	Hex Capscrew, 5/8-11 x 4-1/2	_____
	3	511-142	Hex Nut, 5/8-11	_____
3	1	512-425	Bushing, 1od x 5/8id x 2	_____
4	1	512-425	Bushing, 1od x 5/8id x 2	_____
	1	511-029	Hex Capscrew, 5/8-11 x 3-1/2	_____
	1	511-214	Hex Nut, 5/8-11 Jam	_____
5	2	518-811	A-Frame Support	_____
	2	510-996	Hex Capscrew, 5/8-11 x 1-1/4	_____
	2	511-142	Hex Nut, 5/8-11	_____
6	6	511-595	Anchor Bracket	_____
	2	511-121	U-Bolt, 1/2-13 x 2sq x 3	_____
	4	511-051	Hex Nut, 1/2-13	_____
7	2	518-803	Rear Anchor Bracket	_____
	4	511-121	U-Bolt, 1/2-13 x 2sq x 3	_____
	8	511-051	Hex Nut, 1/2-13	_____
8A	2	519-126	Hitch Clamp Bar, 4-bar, Side A	_____
8B	2	519-127	Hitch Clamp Bar, 4-bar, Side B	_____
	16	510-786	Hex Capscrew, 1/2-13 x 3-1/4	_____
	16	511-051	Hex Nut, 1/2-13	_____
9	1	515-847	Lower Hitch Crossbar	_____
	8	510-786	Hex Capscrew, 1/2-13 x 3-1/4	_____
	8	511-051	Hex Nut, 1/2-13	_____
10	2	511-652	Anchor Pin	_____
	2	511-243	Hex Nut, 7/8-14	_____
	2	511-362	Linch Pin, 7/16	_____
			ADD (1) Toolbar Frame to Toolbar Hitch	
11	1		Toolbar Frame, 2sq x 3-bar x ____ x ____ (choose size below)	
		20034-060	60 x 3/16w	_____
		20034-064	64 x 3/16w	_____
		20034-072	72 x 3/16w	_____
		20034-084	84 x 3/16w	_____
		20034-096	96 x 3/16w	_____

for 2212-DvE15, 2460v?

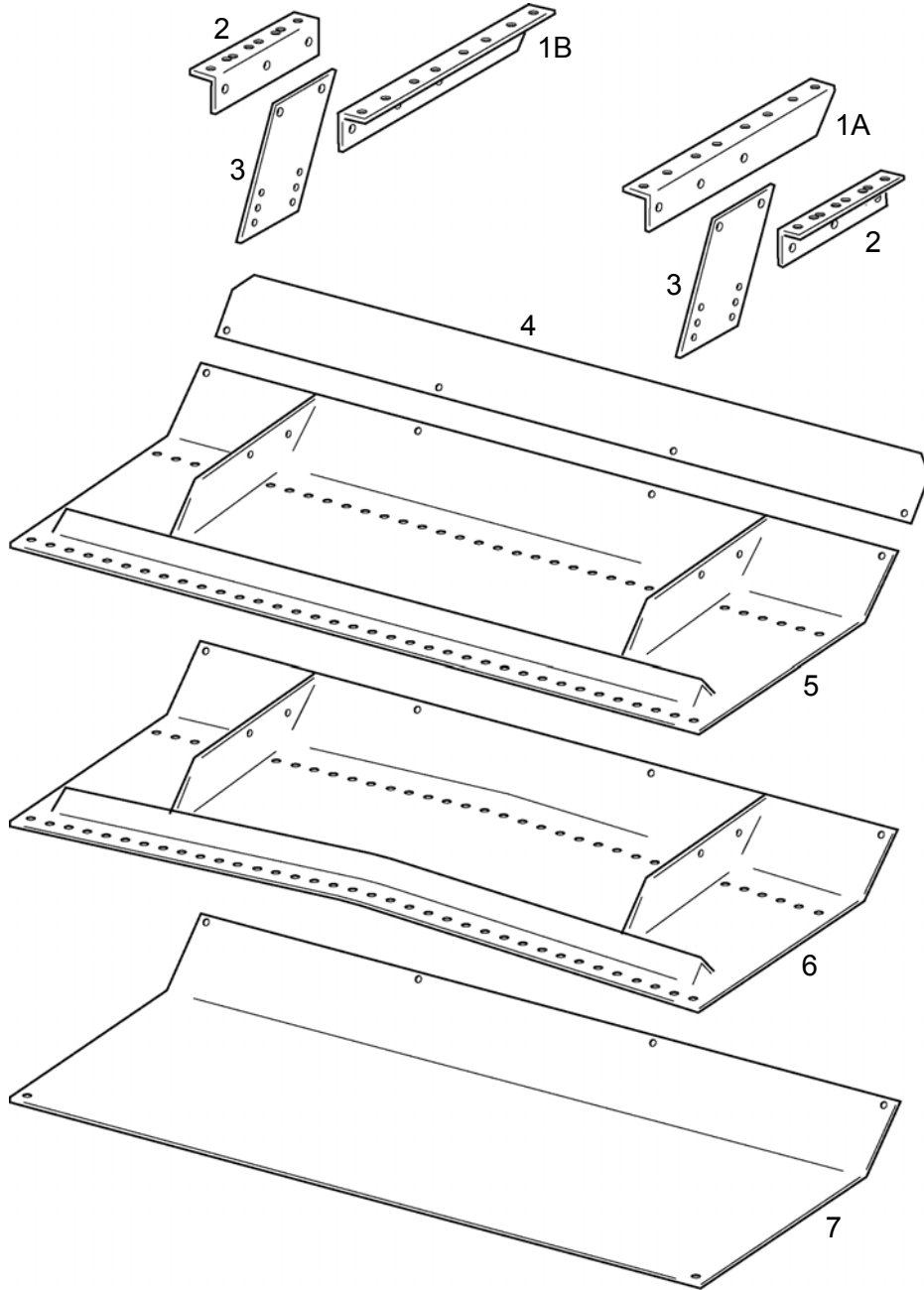
PARTS LIST



PARTS LIST

Ref	Quan	Part No	Description	Price
	1	20327	Furrow Shank Set - includes Ref 1 thru 3	_____
1A	1	517-615	Shank Half Bracket, 2-Bar Side A	_____
1B	1	517-616	Shank Half Bracket, 2-Bar Side B	_____
	4	511-121	U-bolt, 1/2-13 x 2sq x 3	_____
	8	511-051	Hex Nut, 1/2-13	_____
2A	1	517-613	Shank Half Bracket, Side A	_____
2B	1	517-614	Shank Half Bracket, Side B	_____
	2	511-121	U-bolt, 1/2-13 x 2sq x 3	_____
	4	511-051	Hex Nut, 1/2-13	_____
3	2	519-000	Rev Furrow/Ripper Shank, 1-1/4 x 3	_____
	4	516-518	Shear Bolt, 1/2-13 x 2-1/2	_____
	4	511-065	Hex Capscrew, 1/2-13 x 2-1/2	_____
	8	511-051	Hex Nut, 1/2-13	_____
			[Fasteners to install Flat-Mount Shovel]	
	6	511-101	Hex Capscrew, 3/8-16 x 1	_____
	6	511-008	Hex Nut, 3/8-16	_____
	2	517-676	OPTION Furrow Wing Pkg	
4L	2	517-556	Furrow Wing, Left	_____
4R	2	517-557	Furrow Wing, Right	_____
	4	511-066	Hex Capscrew, 1/2-12 x 2-1/4	_____
	4	511-051	Hex Nut, 1/2-13	_____
			ADD as needed to complete Furrow/RipperShank Asby	
	2	517-817	Flat-Mount Shovel, 7"	_____
5	2	517-836	Flat-Mount Shovel, 10"	_____
6	2	518-837	Flat-Mount Shovel, 12"	_____
7	2	517-179	Ripper Point, 1-1/2 x 6	_____
			Assemblies	
	1	99002FA	Bag of Shear Bolts - includes (6) of 516-518 & (6) 511-051	_____

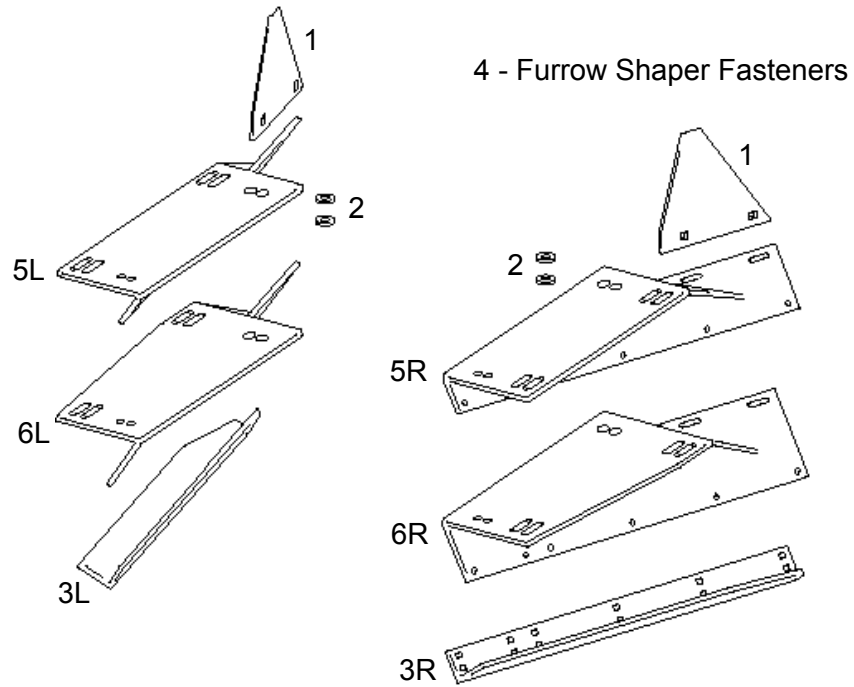
PARTS LIST



PARTS LIST

Ref	Quan	Part No	Description	Price
	1	20417	Shaper Pan Asby - includes Ref 1 thru 5	_____
1A	1	517-504	Mounting Bracket, Side A	_____
1A	1	517-505	Mounting Bracket, Side B	_____
	4	511-121	U-Bolt, 1/2-13 x 2sq x 3	_____
	8	511-051	Hex Nut, 1/2-13	_____
2	2	517-513	Mounting Bracket, Reversible	_____
	2	511-121	U-Bolt, 1/2-13 x 2sq x 3	_____
	4	511-051	Hex Nut, 1/2-13	_____
3	2	517-507	Shaper Pan Leg	_____
	4	511-156	Hex Capscrew, 5/8-11 x 1-1/2	_____
	4	511-142	Hex Nut, 5/8-11	_____
4	1	521-772	Front Shield, 72"	_____
	4	511-071	Hex Capscrew, 1/2-13 x 1-1/4	_____
	4	511-184	Flat Washer, 1/2 SAE	_____
	4	511-051	Hex Nut, 1/2-13	_____
5	1	522-472	Shaper Pan, 72"	_____
	4	511-070	Hex Capscrew, 1/2-13 x 1-1/4	_____
	4	511-051	Hex Nut, 1/2-13	_____
			OPTION	
	1	17316	Crowned Shaper Pan Pkg - includes Ref 6, replaces Ref 5	_____
6	1	526-672	Crowned Shaper Pan, 72"	_____
			OPTION	
			Shaper Pan Poly Liner	
7	1	522-772	Shaper Pan Poly Liner, 72"	_____
7	1	522-872	Crowned Shaper Pan Poly Liner, 72"	_____

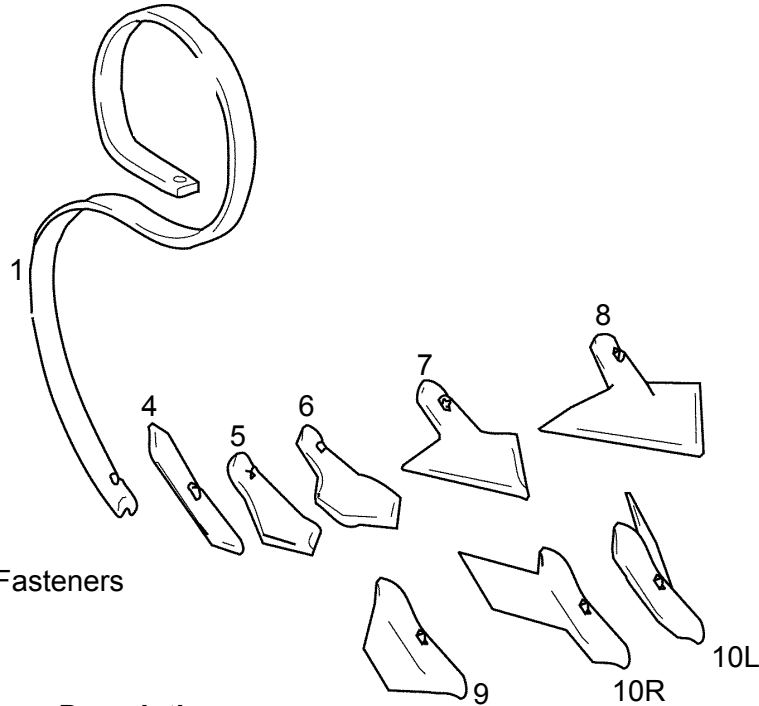
PARTS LIST



PARTS LIST

Ref	Quan	Part No	Description	Price
	1	519-321	Bed Height Completing Pkg - includes Ref 1 thru 4	_____
1	2	518-617	Adjustable Side Shield	_____
	4	510-750	Carriage Bolt, 3/8-16 x 1	_____
	4	511-194	Flat Washer, 3/8 USS	_____
	4	511-008	Hex Nut, 3/8-16	_____
2	4	512-057	Heavy Washer, 1/2 x 1-1/2od	_____
3L	1	518-608	Furrow Shoe, Left	_____
3R	1	518-609	Furrow Shoe, Right	_____
	12	510-750	Carriage Bolt, 3/8-16 x 1	_____
	12	511-008	Hex Nut, 3/8-16	_____
4			[Furrow Shaper Fasteners]	_____
	2	511-069	Hex Capscrew, 1/2-13 x 1-1/2	_____
	6	511-070	Hex Capscrew, 1/2-13 x 1-1/4	_____
	4	511-184	Flat Washer, 1/2 SAE	_____
	8	511-051	Hex Nut, 1/2-13	_____
			ADD (1) Bed Height Package to complete Shaper Pan Asby	
	1	519-303	Bed Height Pkg, 3" base for 3" or 4" adjustable bed height - includes Ref 5L, 5R	_____
5L	1	518-653	Furrow Shaper, 3" Base Left	_____
5R	1	518-663	Furrow Shaper, 3" Base Right	_____
	1	519-305	Bed Height Pkg, 5" Base for 5" or 6" adjustable bed height - includes Ref 6L, 6R	_____
6L	1	518-655	Furrow Shaper, 5" Base Left	_____
6R	1	518-665	Furrow Shaper, 5" Base Right	_____

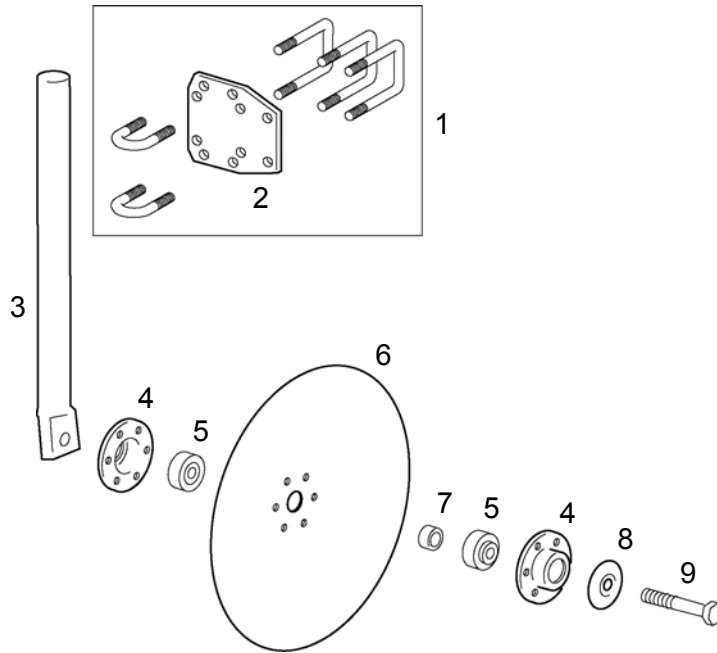
PARTS LIST



3 - Shovel Fasteners

Ref	Quan	Part No	Description
SPECIALTY ATTACHMENT			
	*	20136	High-Clearance S-Tine Asby, includes ref nos 1 thru 3
quantity needed depends on application; typically 7 or 9, quantity for each shown			
1	1	512-843	S-Tine, High-Clearance
2	1	517-605	Tine Clamp Plate
	1	510-751	Hex Capscrew, 1/2-13 x 3-3/4
	1	511-051	Hex Nut, 1/2-13
	2	510-719	Hex Capscrew, 3/8-16 x 3-3/4
	2	511-008	Hex Nut, 3/8-16
3			[Shovel Fasteners]
	1	10798	Plow Bolt, 3/8-16 x 1-1/2
	1	11194	Flat Washer, 3/8 USS
	1	11008	Hex Nut, 3/8-16
ADD Point or Shovel			
4		11555	Reversible Point, HD
5		11556	Shovel, 2-1/4 HD
6		11557	Shovel, 4 HD
7		11558	Shovel, 7 HD
8		11559	Shovel, 9 HD
9		14094	ShaperShovel
10L		16398	ShaperShovel, Left
10R		16410	ShaperShovel, Right

PARTS LIST



Ref	Quan	Part No	Description	Price
	1	20116	Disk, 16", Shank & Clamp Asby for 2sq - incl Ref 1 thru 9	_____
1	1	20155-5	D5-Clamp Asby, 2sq x 1-1/2rd - includes Ref 2 w/fasteners	_____
2	1	518-438	D5-Plate, 2 x 1-1/2	_____
	3	511-121	U-Bolt, 1/2-13 x 2sq x 3	_____
	2	510-718	U-Bolt, 1/2-13 x 1-1/2rd x 2-3/4	_____
	10	511-051	Hex Nut, 1/2-13	_____
3	1	517-837	Shank	_____
4	2	518-846	Hub Flange	_____
	6	510-709	Hex Capscrew, 5/16-18 x 7/8	_____
	6	511-240	Hex Nut, 5/16-18 Nylock	_____
5	2	517-919	Ball Bearing, 205RVA, John Deere A27002	_____
6	1	517-910	Disk Blade, 16"	_____
7	1	518-849	Spacer, 1-1/8 OD x 3/4 ID x 0.350	_____
8	1	518-848	Dust Cover	_____
9	1	510-975	[Bearing Bolt] Hex Capscrew, 3/4-10 x 3-3/4	_____
	1	511-172	Hex Nut, 3/4-10	_____
		Assemblies - includes related fasteners		
		519-216	Complete Hub & Fastener Asby - includes Ref 2, 3, 5, 6 and 7	_____
		519-296	Disk & Hub Asby - includes Ref 2 thru 5	_____
		19116FA	Final Assembly Bag - includes Ref 6 and 7	_____