



**BUCKEYE TRACTOR CO**

## **Operation Manual**

**Model 2331-T  
BED SHAPER**

Version A14 • Serial No. 5170100 • Effective 9-1-13

Serial No: \_\_\_\_\_ Date Received: \_\_\_ / \_\_\_ / \_\_\_

Purchased From: \_\_\_\_\_

Order / Invoice No: \_\_\_\_\_



**BUCKEYE TRACTOR CO**

**P.O.Box 97 • 11313 Slabtown Road • Columbus Grove, Ohio 45830 USA**

**Call 419-659-2162 • Fax 419-659-2082**

**800-526-6791 • [www.BucTraCo.com](http://www.BucTraCo.com)**

*YOUR PURCHASE INCLUDES COMPLETE AFTER-SALE SERVICE*

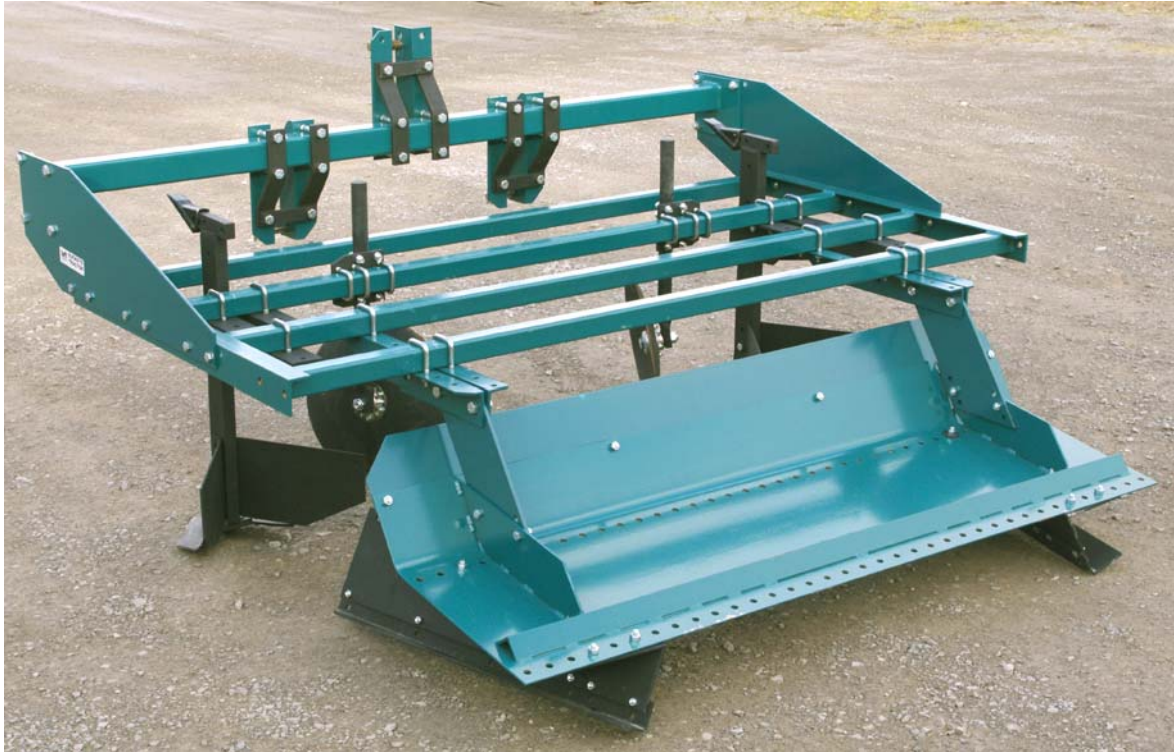
## GALLERY



## GALLERY



## GALLERY

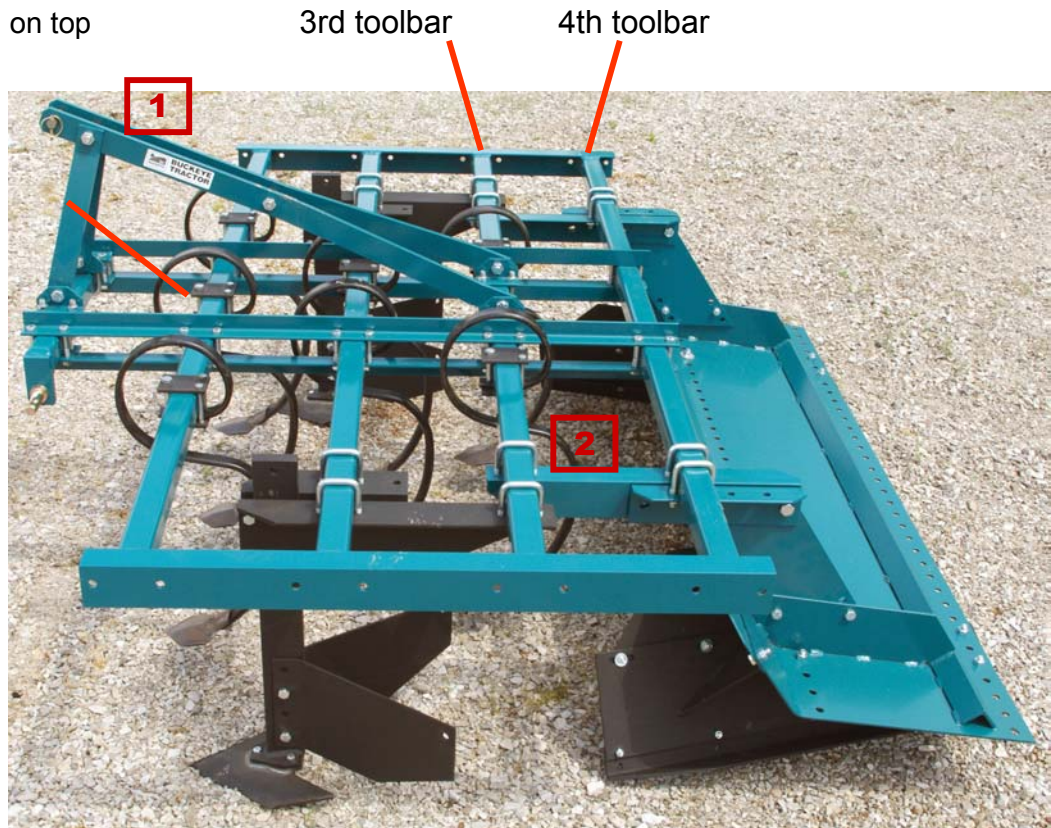


2131-T equipped with Open-Center Hitch

## SET-UP

- 1** Raise hitch mast. Parts are folded down on top of toolbar frame.

5/8 x 1-1/4 hex capscrews and 5/8 nuts (shipped on bed shaper)



- 2** Re-Install shaper pan assembly on 3rd and 4th toolbars.

- 3** Re-install shaper pan to rear position. Front position is for shipping.

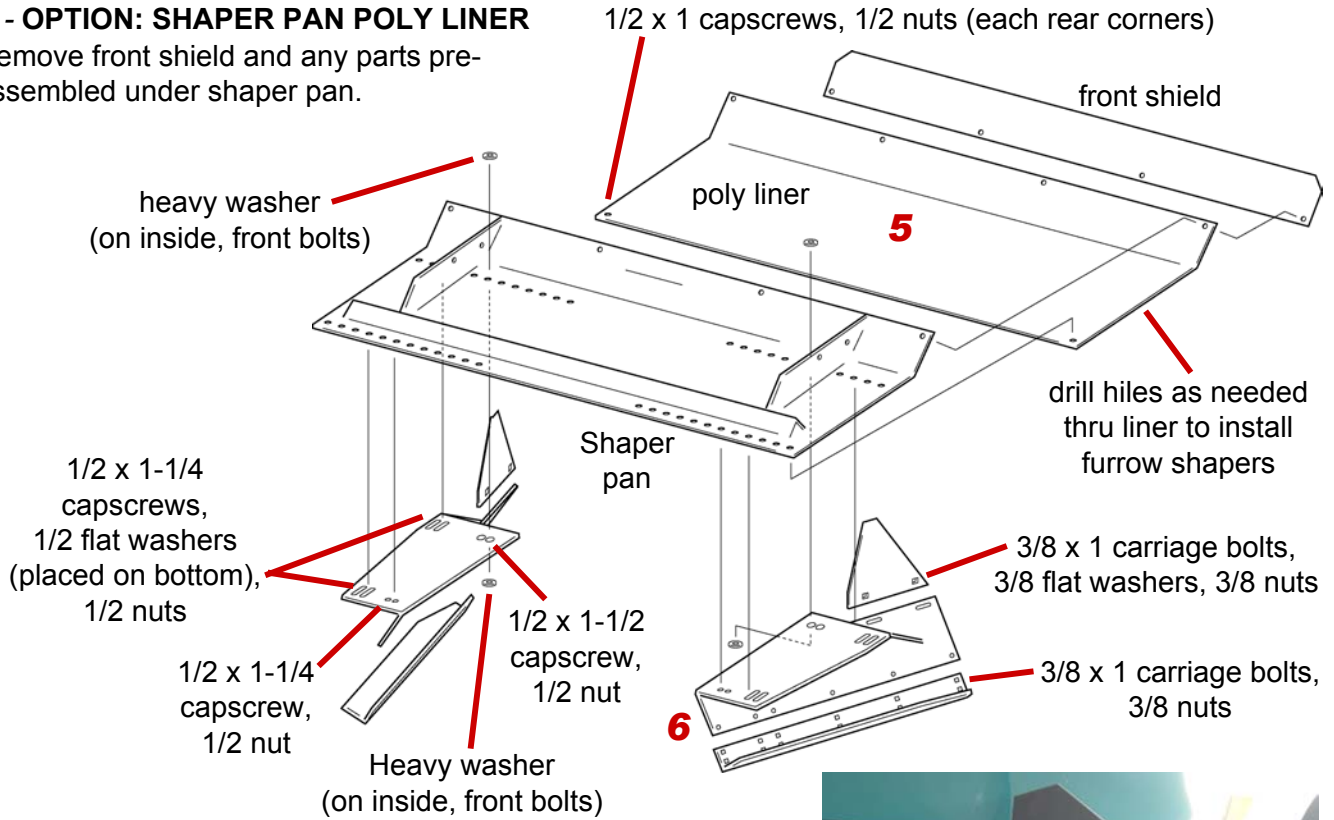
- 4** Crowned pan (optional). Pre-installed.



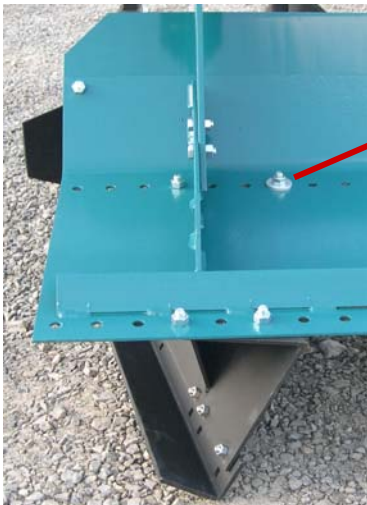
# SET-UP

## 5 - OPTION: SHAPER PAN POLY LINER

Remove front shield and any parts pre-assembled under shaper pan.

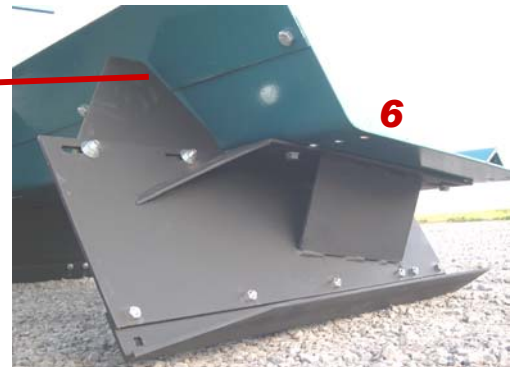
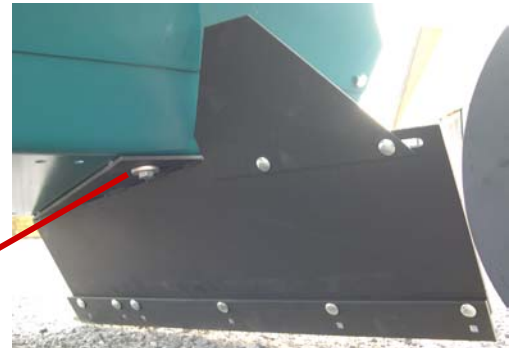


6 - Assemble furrow shapers. Parts for lower bed heights may be pre-installed. See ADJUSTMENTS to set-up for specific bed width.



Heavy washers (on inside, front bolts, top and bottom)

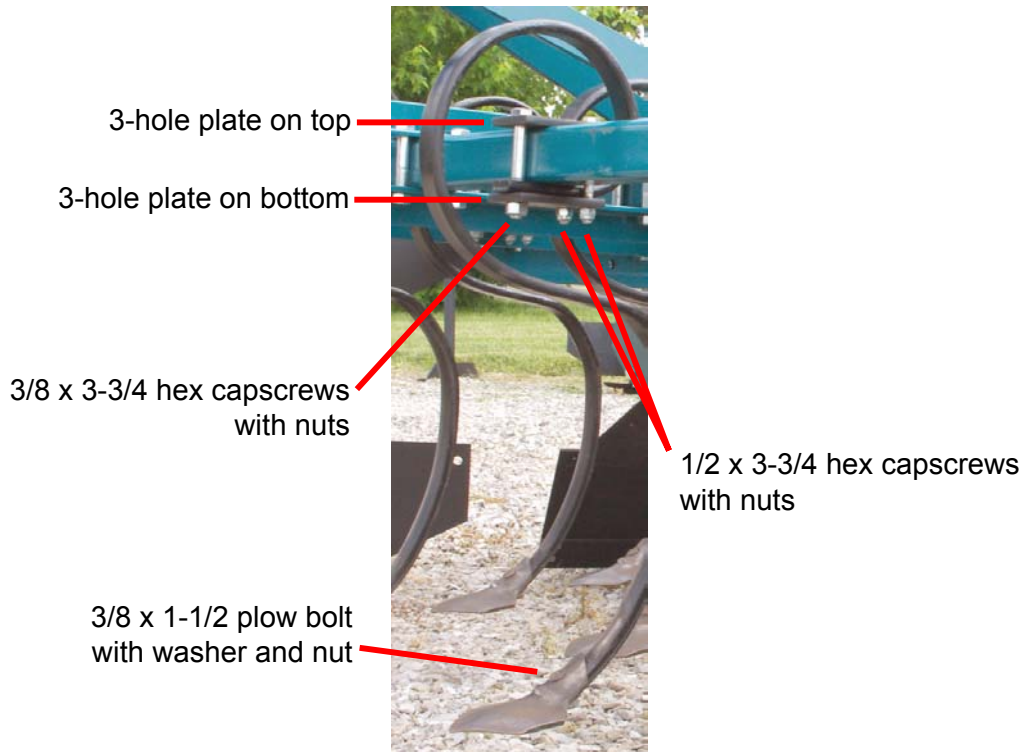
Position side shield near or against shaper pan



6

## SET-UP

**7 - Install S-Tines.** This is a typical arrangement for best soil flow into the pan.

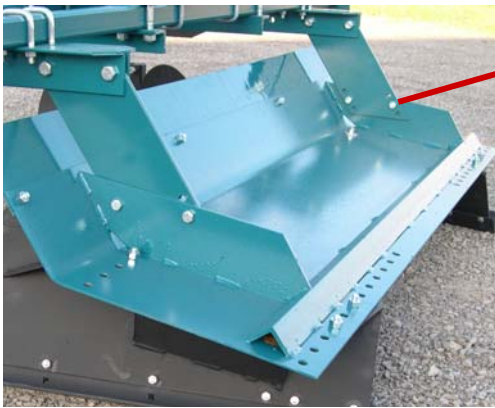


## ADJUSTMENT

### TOOLBAR HEIGHT

Toolbar height is not critical to function unless S-tines or possibly other tillage attachments are installed on the toolbar frame. This allows depth of these attachments to be adjusted in relation to shaper pan, which is the depth control. Adjusting the top link can provide minor depth adjustment. Toolbar should essentially be level during operation.

Toolbar height is relative to the bottom of the shaper pan and adjusted at the shaper pan. This is not necessarily an on-the-go adjustment, but should not need to be. On-the-go adjustment is possible for any or all components, which is priced accordingly.

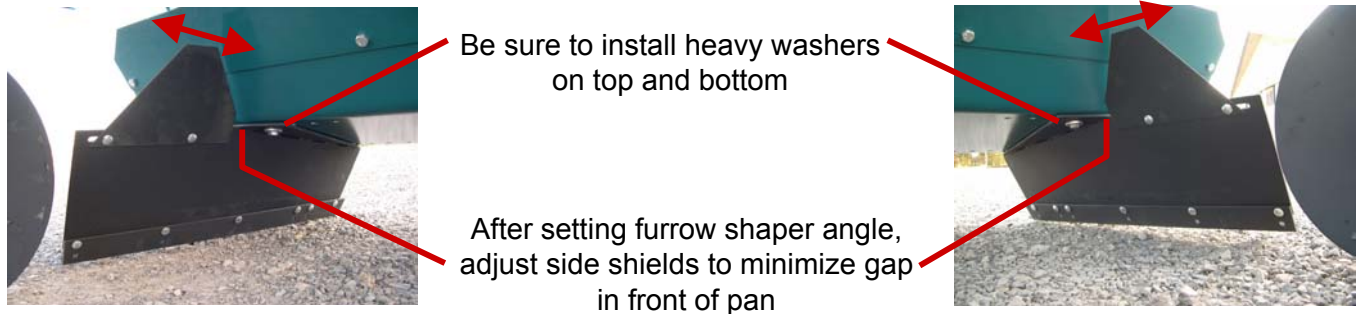


Adjust toolbar height here. Set at the MIDDLE HOLE for 16" toolbar height, which is considered standard. Additional holes are provided for 15-in and 17-in toolbar height, which is currently only useful for more or less tillage depth for S-tines. There is no benefit to adjust this when using shaping disks.



# ADJUSTMENT

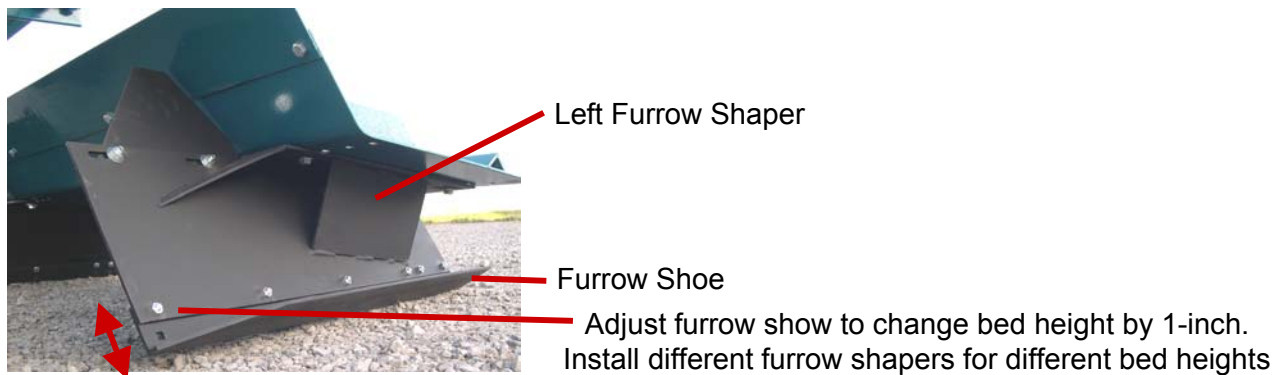
## OPENING WIDTH -- BED TOP WIDTH -- FURROW WIDTH



## BED HEIGHT

A Bed Height Package is added to complete each Bed Shaper. Different Bed Height Packages allow the bed height to be changeable for a 3" to 6" range, however, each Bed Height Pkg is adjustable 1-inch. Fully adjustable furrow shapers have been designed, but these are complex and cost much more, so different furrow shapers for different bed heights are good, practical, and economical.

A Bed Height Package consists of (1) Left Furrow Shaper Bracket and (1) Right Furrow Shaper Bracket. Furrow shoes, side shields and fasteners are used with any Bed Height Pkg.



## OPERATION



To start, toolbar frame should be eyeball level (adjust top link on tractor hitch)

When re-working beds, outside furrow wings can be turned up to avoid ridging on the previous bed

The tractor hitch top link can be shortened or lengthened for minor adjustments in tillage depth. For special set-ups, spacers are available to lower S-tines. The shaper pan can also be adjusted 1" up or down (Page 7) for significant changes in tillage depth. Note that S-tines are meant for light, shallow tillage.